

GENERAL INFORMATION

Date	11/16/2023
Time	12:37
Institution	Mid Cities
Institution ID	295
Building Name	Mid Cities
Department	Nursing
Floor	3
Unit/Area	3rd floor patient care
Auditor	Jessica Nwachukwu
Additional Auditors	Cori Harris, Katherine Heath

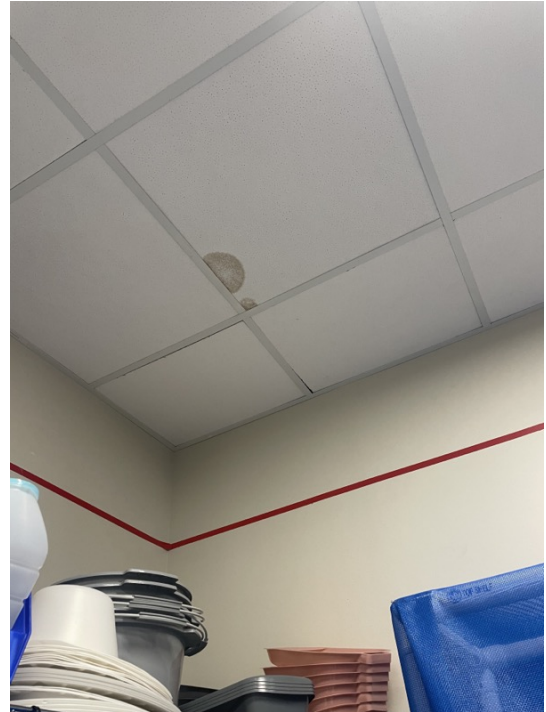
CLEANLINESS AND STORAGE

Are patient transport gurneys and wheelchairs clean?	Yes
Are EVS closets clean?	Yes
Are EVS closets secure?	Yes
Are hospital approved disinfectant available?	Yes
Are mats intact and clean?	No
Mats condition image	



Corrected During Inspection	<input checked="" type="checkbox"/>
Has high level dusting been completed?	Yes
Are hallways clean and uncluttered?	Yes
Is equipment kept to one side of the hallway?	Yes
Are ceiling tiles clean?	No

Ceiling tile image



Are doors able to swing fully open (no propped doors/wedges)?

Yes

Are corrugated cardboard boxes removed?

No

Corrugated cardboard boxes image



Corrugated cardboard boxes notes
Found in Quest lab

HC-EH IC EOC Rounding Clinical Areas

Are floors clean, and free trash of boxes?	Yes
Is food in refreshment area stored in labeled bags?	Yes
Is the microwave and refreshment area clean?	No
Microwave and refreshment area image	



Corrected During Inspection	<input checked="" type="checkbox"/>
Is the medication prep area clean and organized?	No
Medication prep area image	



Medication prep area notes

Found in med room cabinets from WOW drawers; discarded
Corrected During Inspection

Is patient information in public view (i.e., charts, computer terminals)? Yes

Patient information in public view notes

Patient labels and information found in drawers and cabinets. Discarded appropriately
Corrected During Inspection

Do storage units have solid bottoms? Yes

Are storage units, bins, and shelving clean? Yes

Are supplies 6 inches above the floor and 18 inches below the ceiling? Yes

Is only appropriate storage located under the sink? Yes

Are supplies stored where food is consumed? No

Is clean equipment stored separately from soiled equipment? Yes

Is the Clean Utility Room clean and organized? Yes

Is the Dirty Utility Room labeled, clean, and secured? Yes

Is hazardous waste disposed of appropriately? Yes

Do biohazard bins have lids? Yes

Are oxygen tanks kept 5 feet away from any combustible items? Yes

Are more than 12 full oxygen tanks stored together? No

Are empty oxygen tanks properly labeled? Yes

Are Peg/NG irrigation sets stored dry? Yes

EXPIRED MEDS, SOLUTIONS, AND SUPPLIES

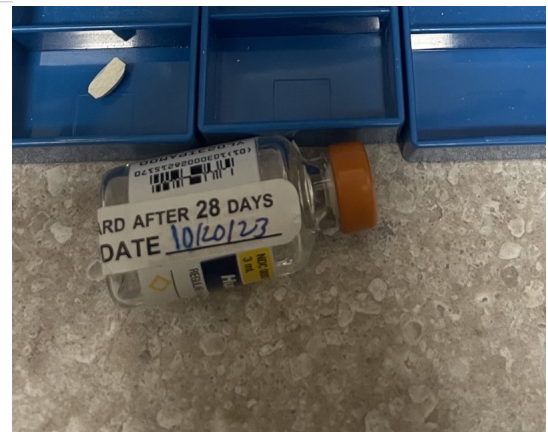
Are vacutainer tubes expired? No

Are irrigation fluids labeled, discarded, and not expired? Yes

Are multi-dose vials expired? No

Are medications expired? Yes

Expired medications image



Corrected During Inspection

Are open drugs/spiked IVs labeled per policy? No

Open drugs/spiked IVs image



Open drugs/spiked IVs notes

Open drugs in pill cutters found in WOWs; discarded appropriately

Corrected During Inspection

Are solutions expired? Yes

Expired solutions notes

Glucometer solutions without dates; discarded

Corrected During Inspection

Are patient supplies expired? No

Are sterile items labeled with the name visible? Yes

Is food in storage expired? No

REFRIGERATOR

Is the food in the patient refrigerator/freezer labeled, dated, and covered? No

Food in patient refrigerator/freezer image



Are patient refrigerators clean, rubber seals ok, and no ice build-up in the freezers?
Patient refrigerators image

No



Corrected During Inspection
Is there expired food in patient refrigerators?

No

HC-EH IC EOC Rounding Clinical Areas

Are medication refrigerator temperatures recorded daily?	Yes
Is the medication refrigerator clean/defrosted?	Yes
Is food stored in the medication refrigerator?	No

GENERAL IC PRACTICES

Are food, drinks, and cosmetics located in patient care areas, including nurses' station?	No
Are personal lotions located in patient care areas?	No
Is PPE disposed of in patient rooms?	Yes
Are PPE cabinets appropriately stocked?	Yes
Is PPE appropriately used?	Yes
Is hand hygiene performed before and after patient care?	Yes
Are soap and paper towels present in the sink area?	Yes
Are clean linen carts covered, with the door shut?	Yes
Do linen carts have a barrier on the bottom shelf?	Yes
Is the dirty linen hamper more than 3/4 full?	No
Is dirty linen covered?	Yes
Are crash cart dates current?	Yes
Are crash carts checked according to policy?	Yes
Are sharps containers secured?	Yes
Are sharps containers more than 3/4 full?	No
Do foley bags hang below the bladder, and not on the floor?	Yes
Are clean and dirty activities performed in separate, clearly distinct areas?	Yes
Is there visible mildew in any room?	No
Are there visible ants or insects?	No

ADDITIONAL CONCERNS

Are there any additional comments, concerns, or pictures related to this space?	Yes
---	-----

Additional Notes

Open supplies found in supply drawer behind nurses' station and in nursing station drawers

Additional Image



SCORE

Auditor Confirmation	✓
Cleanliness and Storage Correct	24.00
Cleanliness and Storage Answered	30.00
Cleanliness and Storage Score	80.00
Expired Meds, Solutions, and Supplies Correct	6.00
Expired Meds, Solutions, and Supplies Answered	9.00
Expired Meds, Solutions, and Supplies Score	66.67
Refrigerator Correct	4.00
Refrigerator Answered	6.00
Refrigerator Score	66.67
General IC Practices Correct	19.00
General IC Practices Answered	19.00
General IC Practices Score	100.00
Therapy Gym Correct	0.00
Therapy Gym Answered	0.00
Therapy Gym Score	0.00
Pool Therapy Correct	0.00
Pool Therapy Answered	0.00
Pool Therapy Score	0.00
Total Compliant	53.00
Total Answered	64.00
Total Score	82.81